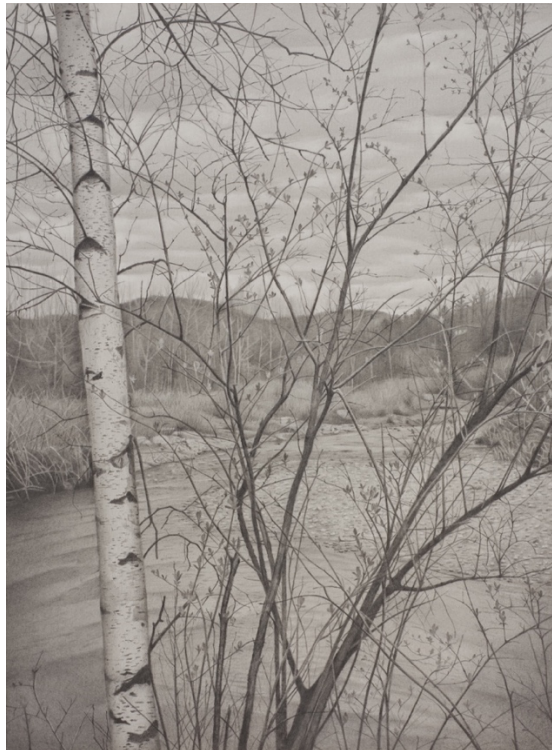


FOR IMMEDIATE RELEASE

MARY REILLY: Nature of Vermont
April 5—April 30, 2021

@DFN Projects, 16 E 79th Street, Suite G-2, New York, NY 10075
Indoor/outdoor opening reception: Thursday, April 8th, 6pm - 8pm.



Mary Reilly, *Riverbank 4*, 2020, graphite pencil on paper, 23.5 x 17.5 in.

(New York: Upper East Side) Garvey | Simon is pleased to present *Mary Reilly: Nature of Vermont*, opening April 5, 2020 at DFN Projects, 16 East 79th Street, Suite G-2, New York, NY 10075. Mary Reilly's photorealistic drawings of sylvan landscapes and still lifes of wild flora are celebrations of her local Vermont terrain. Attracted to isolated, almost liminal spaces, Reilly's conscientious details are bolstered by a hint of fantasy. Ranging from sweeping, monumental scenes to intimate studies, the artist's graphite drawings are a feat of technical prowess. *Mary Reilly: Nature of Vermont* is on view from April 5 – April 30, 2021. **An indoor/outdoor opening reception will take place at DFN Projects on Thursday, April 8th (weather permitting.) The full exhibition will also be available on Artsy.net.**

Mary Reilly's laborious method of toning her paper serves as the starting point for her intricate compositions. She begins by covering the entire sheet with up to eight smooth, unmodulated coats of graphite. From here, Reilly deepens her darker tones and elevates her highlights. At once additive and subtractive, this process allows Reilly to create subtle shifts in shade and incremental gradients that result in myriad tonal effects and explore the full diversity achievable in a gray-scale palette. This technique also lends itself to Reilly's play with depth and scale. Whether raked views of monumental trees, or tight, jostling arrangements of seashells and leaves, the ease of her transitions belies the intricacy of her compositions.

Reilly's move from New York City to Northern Vermont has signaled a shift in the scale and scope of her drawings. Unbridled scenes bask in soft expanses of negative space, dramatic atmospheric effects, and prodigious plant life. There is a certain spontaneity and tranquility in her drawings that suggest an environment untouched, sequestered from interference and almost atemporal in their serenity. She reflects,

"Since my move to northern Vermont, I have become immersed in nature and the magnitude of its ever changing seasons. Images that I once traveled to find in New York City I now stumble upon in my everyday life."

Reilly treats her subjects with reverence, acquiescing to their wildness and allowing them to command and overwhelm her pictorial plane. At once ancient and immediate, Reilly's sylvan scenes are striking in their solitude.

ABOUT THE ARTIST

New York native Mary Reilly studied art at SUNY Purchase, the School of Visual Arts, the Art Students League of New York, and the National Academy School of Fine Arts. After a short stint as a graphic designer, Reilly then chose a career in fine art. She studied with artists Frederick Brosen and Sharon Sprung, who both work with graphite and often in photorealistic styles. Mary Reilly is devoted to drawing in graphite, her medium of choice. Her work has been exhibited in solo and group shows in New York City since 2001, and is featured in the permanent collections at Bronx Museum of the Arts, Bronx, NY, New York Historical Society, New York, NY, The Arkansas Museum of Fine Arts, Little Rock, AR, The Mint Museum, Charlotte, NC, and the Eskenazi Museum of Art at Indiana University, Bloomington, IN.